

## Element Cards – Information and pictures taken from <http://www.webelements.com/>

### H Hydrogen



Atomic Number	1
Atomic Mass	1.00794
Standard State	gas
Color	colorless
Group	none
Classification	Nonmetal

### He Helium



Atomic Number	2
Atomic Mass	4.002602
Standard State	gas
Color	colorless
Group	Noble Gas
Classification	Nonmetal

### Li Lithium



Atomic Number	3
Atomic Mass	6.941
Standard State	solid
Color	silvery white/gray
Group	Alkali Metal
Classification	Metal

### Be Beryllium



Atomic Number	4
Atomic Mass	9.012182
Standard State	solid
Color	colorless
Group	Alkaline Earth Metal
Classification	Metal

## B Boron



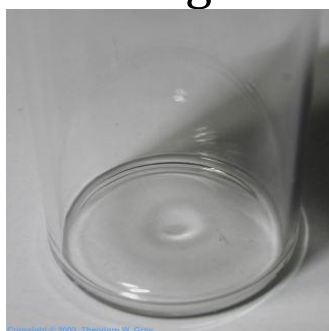
Atomic Number	5
Atomic Mass	10.811
Standard State	solid
Color	black
Group	none
Classification	Semi-metallic

## C Carbon



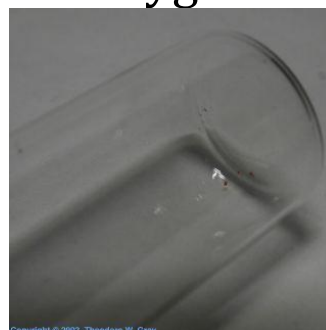
Atomic Number	6
Atomic Mass	12.0107
Standard State	solid
Color	black; colorless
Group	
Classification	Nonmetal

## N Nitrogen



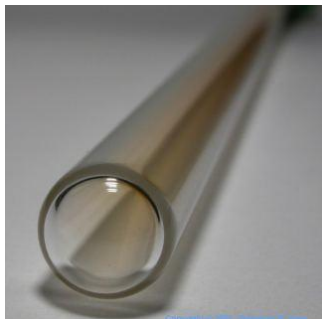
Atomic Number	7
Atomic Mass	14.0067
Standard State	gas
Color	colorless
Group	Pnictogen
Classification	Nonmetal

## O Oxygen



Atomic Number	8
Atomic Mass	15.9994
Standard State	gas
Color	colorless
Group	Chalcogen
Classification	Nonmetal

## **F** Fluorine



Atomic Number	9
Atomic Mass	18.9984032
Standard State	gas
Color	pale yellow
Group	Halogen
Classification	Nonmetal

## **Ne** Neon



Atomic Number	10
Atomic Mass	20.1797
Standard State	gas
Color	colorless
Group	Noble Gas
Classification	Nonmetal

## **Na** Sodium



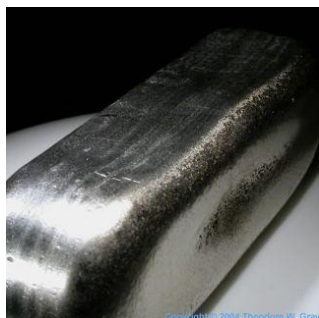
Atomic Number	11
Atomic Mass	22.98976928
Standard State	solid
Color	silvery white
Group	Alkali metal
Classification	Metal

## **Mg** Magnesium



Atomic Number	12
Atomic Mass	24.3050
Standard State	solid
Color	silvery white
Group	Alkaline earth metal
Classification	Metal

## Al Aluminum



Atomic Number	13
Atomic Mass	26.9815386
Standard State	solid
Color	silvery
Group	
Classification	Metal

## Si Silicon



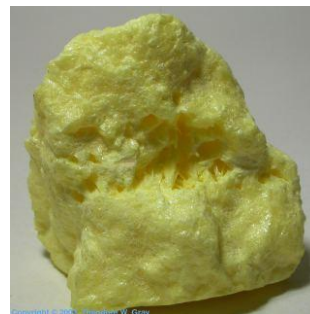
Atomic Number	14
Atomic Mass	28.0855
Standard State	solid
Color	dark gray with bluish tinge
Group	
Classification	Semi-metallic

## P Phosphorus



Atomic Number	15
Atomic Mass	30.973762
Standard State	solid
Color	colorless;red; silvery white
Group	Pnictogen
Classification	Non-metallic

## S Sulfur



Atomic Number	16
Atomic Mass	32.065
Standard State	solid
Color	lemon yellow
Group	Chalcogen
Classification	Non-metallic

# Cl

## Chlorine



Atomic Number	17
Atomic Mass	35.453
Standard State	gas
Color	yellowish green
Group	Halogen
Classification	Non-metallic

# Ar

## Argon



Atomic Number	18
Atomic Mass	39.948
Standard State	gas
Color	colorless
Group	Noble gas
Classification	Non-metallic

# K

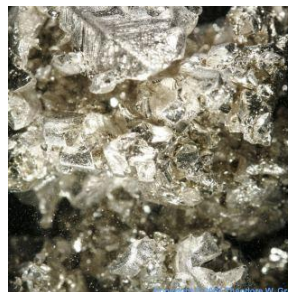
## Potassium



Atomic Number	19
Atomic Mass	39.0983
Standard State	solid
Color	silvery white
Group	Alkali metal
Classification	Metal

# Ca

## Calcium



Atomic Number	20
Atomic Mass	40.078
Standard State	solid
Color	silvery white
Group	Alkaline earth metal
Classification	Metal

## Sc Scandium



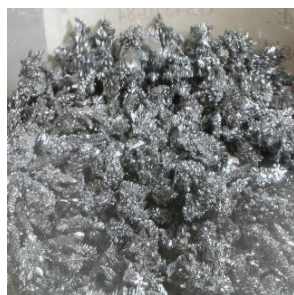
Atomic Number	21
Atomic Mass	44.955912
Standard State	solid
Color	silvery white
Group	
Classification	Metal

## Ti Titanium



Atomic Number	22
Atomic Mass	47.867
Standard State	solid
Color	silvery metallic
Group	
Classification	Metal

## V Vanadium



Atomic Number	23
Atomic Mass	50.9415
Standard State	solid
Color	silvery gray metallic
Group	
Classification	Metal

## Cr Chromium



Atomic Number	24
Atomic Mass	51.9961
Standard State	solid
Color	silvery metallic
Group	
Classification	Metal

## Mn Manganese



Atomic Number	25
Atomic Mass	54.938045
Standard State	solid
Color	silvery metallic
Group	
Classification	Metal

## Fe Iron



Atomic Number	26
Atomic Mass	55.845
Standard State	solid
Color	Lustrous metallic
	grayish tinge
Group	
Classification	Metal

## Co Cobalt



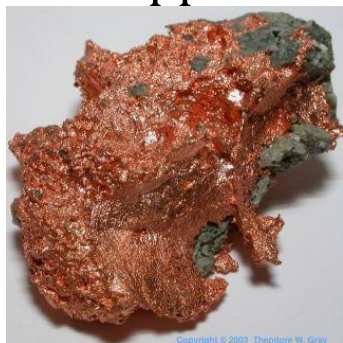
Atomic Number	27
Atomic Mass	58.933195
Standard State	solid
Color	Lustrous metallic
	Grayish tinge
Group	
Classification	Metal

## Ni Nickel



Atomic Number	28
Atomic Mass	58.6934
Standard State	solid
Color	Lustrous metallic,
	silvery tinge
Group	
Classification	Metal

**Cu**  
**Copper**



Atomic Number	29
Atomic Mass	63.546
Standard State	solid
Color	copper
Group	
Classification	Metal

**Zn**  
**Zinc**



Atomic Number	30
Atomic Mass	65.38
Standard State	solid
Color	Bluish pale gray
Group	
Classification	Metal